



Powering progress across North Dakota and South Dakota

The electric grid began taking shape in the 1930s, when rural electrification brought power to farms and small towns. By the 1970s, the regional grid was developed, built strong enough to outlast its original purpose and even anticipate growth. Two generations later, electricity is integrated into our lives in ways those planners could never have dreamed.

Imagine a future for North Dakota and South Dakota that's defined by a resilient, reliable electric grid that supports rural living and thriving communities. The Big Stone South to Hankinson to Bison transmission line will help bring this future to life. Spanning approximately 150 miles, this 345-kilovolt (kV) line would run from Otter Tail Power's Big Stone South Substation in South Dakota to its Hankinson Substation in North Dakota, then continue to Xcel Energy's Bison Substation near Mapleton, North Dakota. Otter Tail Power will lead development and construction.

Big Stone South to Hankinson to Bison (BSSHB) will add approximately 150 miles of 345-kV transmission line across North Dakota and South Dakota, helping to:



Enhance electric reliability



Increase resiliency to extreme weather events



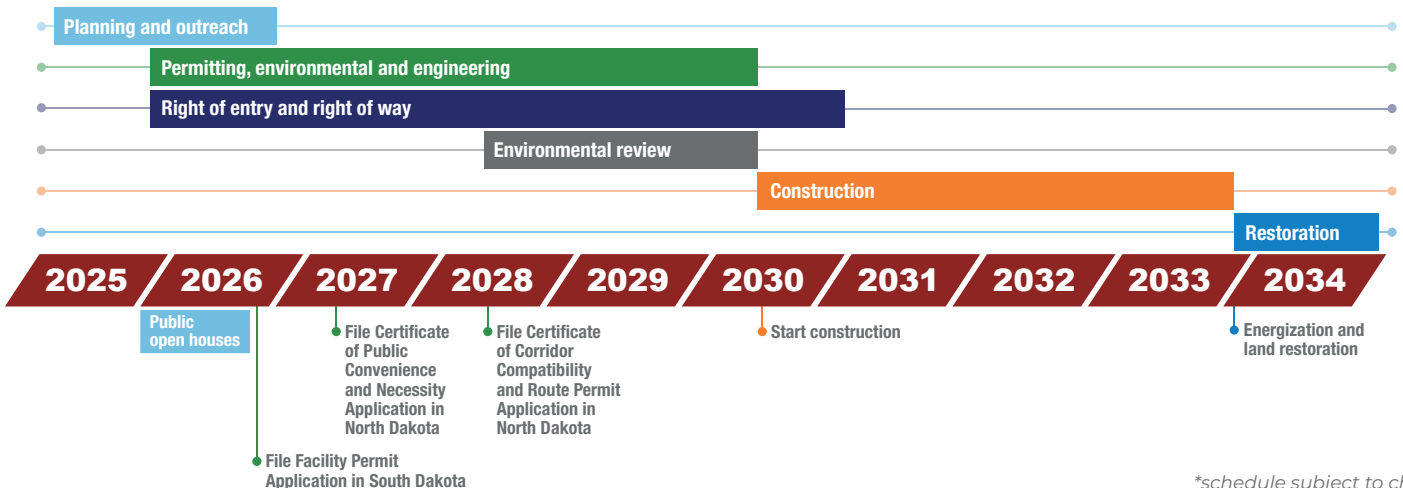
Reduce transmission congestion



Increase access to low-cost energy


Schedule

Developing and constructing a transmission line is a multi-year effort. We'll coordinate with landowners, local governments, agencies, Tribal Nations, and other stakeholders throughout the development process.



*schedule subject to change

Contact us

 1-888-806-4743



www.BigStoneSouthtoHankinsontoBison.com



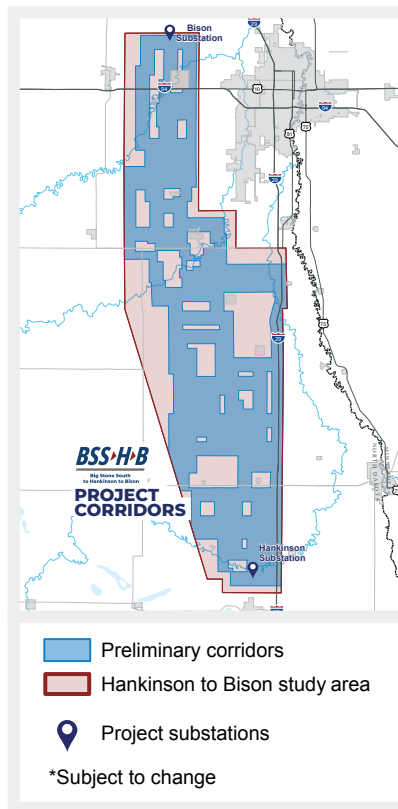
Connect@BigStoneSouthtoHankinsontoBison.com



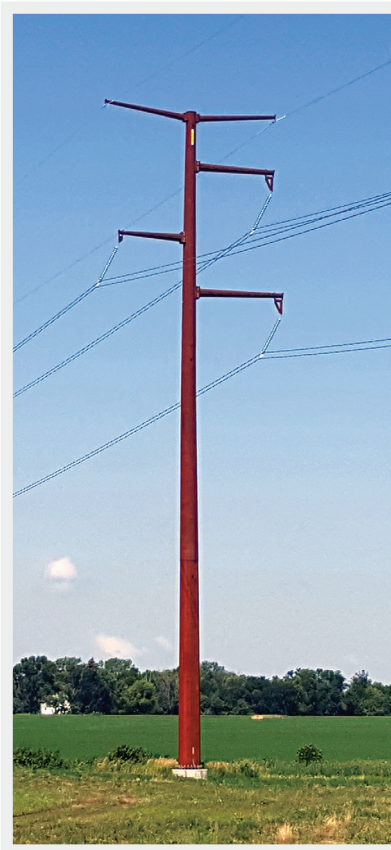
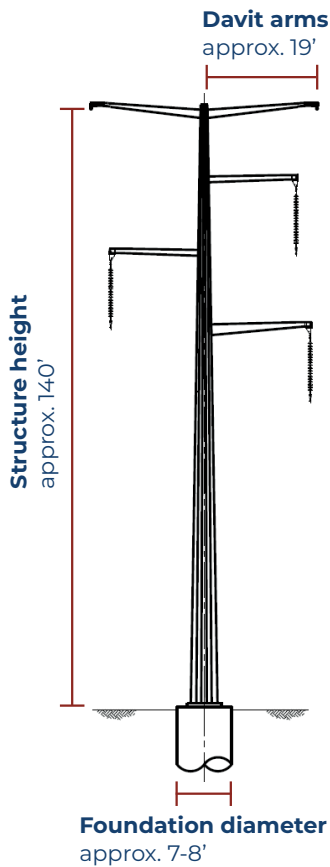
Routing

To develop a new transmission line route, we start with a study area—a broad region between the substations. A study area typically includes several counties and communities, as you'll see on the map.

First, we identify avoidance areas and constraints across the study area and narrow the study area to one- to two-mile-wide corridor where a transmission line could feasibly go. Public input is then used to help refine the corridors into preliminary routes.

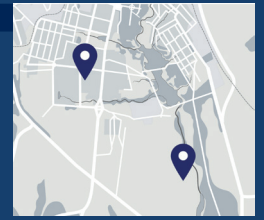


Typical structure

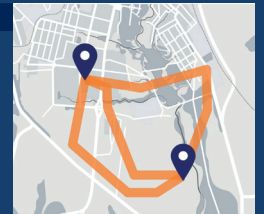


Routing process

1 Define study area



2 Identify project corridors

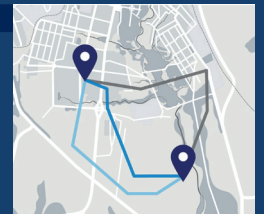


We are here

3 Host public open houses



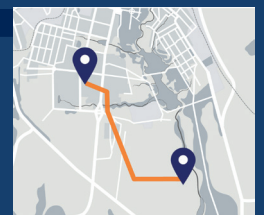
4 Develop preliminary routes



5 Host public open houses



6 Propose route



Acknowledgment: "This material is based upon work supported by the Department of Energy, Grid Deployment Office, under Award Number DE-GD0000931."

Disclaimer: "This report was prepared as an account of work sponsored by an agency of the United States Government. Neither the United States Government nor any agency thereof, nor any of their employees, makes any warranty, express or implied, or assumes any legal liability or responsibility for the accuracy, completeness, or usefulness of any information, apparatus, product, or process disclosed, or represents that its use would not infringe privately owned rights. Reference herein to any specific commercial product, process, or service by trade name, trademark, manufacturer, or otherwise does not necessarily constitute or imply its endorsement, recommendation, or favoring by the United States Government or any agency thereof. The views and opinions of authors expressed herein do not necessarily state or reflect those of the United States Government or any agency thereof."

Contact us

1-888-806-4743



www.BigStoneSouthtoHankinsontoBison.com



Connect@BigStoneSouthtoHankinsontoBison.com

Scan QR Code to learn more about this project.

